

Perc 2 - tamb/ cymbals (sus /20" ride/10" china/hand crash)

# DOUGLASS PORTRAIT

Commissioned by the Hopkins Symphony Orchestra

## PART I: IN THE BEGINNING

J. Kimo Williams

**A** ♩ = 60

**3** *Tremolo Strings Enter* **4**

1-3 4-7

**12**

8-19

**B** *-Birth and Bondage-*

**6**

20-25

**2** **C** **6**

26-27 28-33

**2** **D** **4**

34-35 36-39

**3** **E** ♩ = 80 **8**

*Brass Chorale*

*-Awakening of Mind-*

40-42 43-50

**5**

51-55

Perc 2 - tamb/ cymbals (sus /20" ride/10" china/hand crash)

2

*Rit..* **2** **F** *Solo Trpt with Narrator* **6**

56 57-58 59-64

**4** *Tambourine* **4**

65-68

**Passage: -Flight To Freedom-**

$\text{♩} = 150$

**G** *Woodwind Tutti* *mf*

70

76

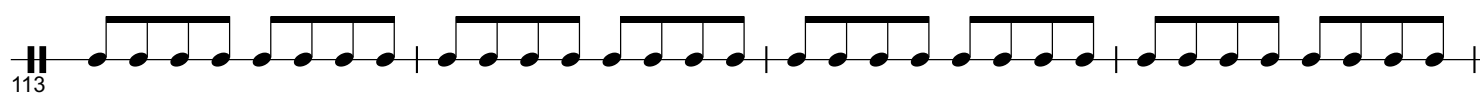
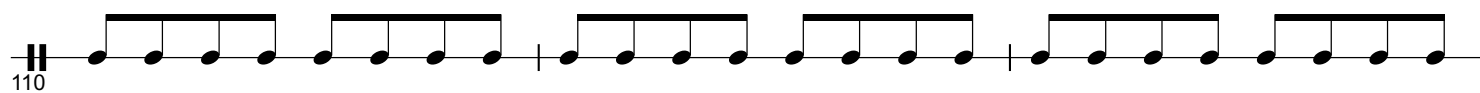
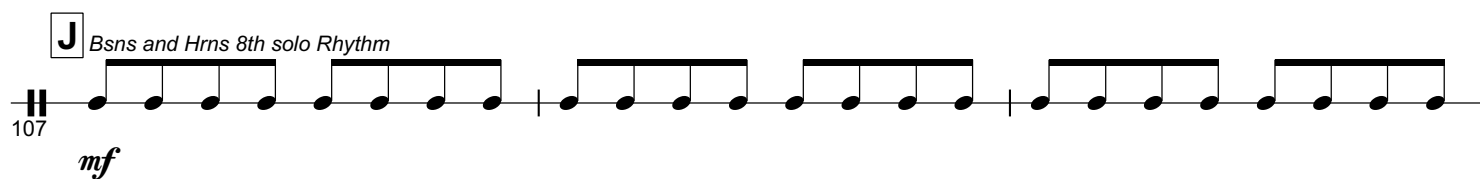
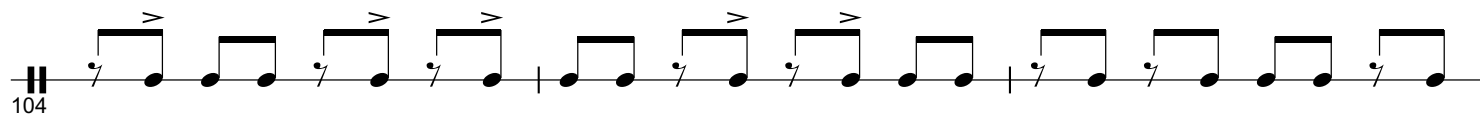
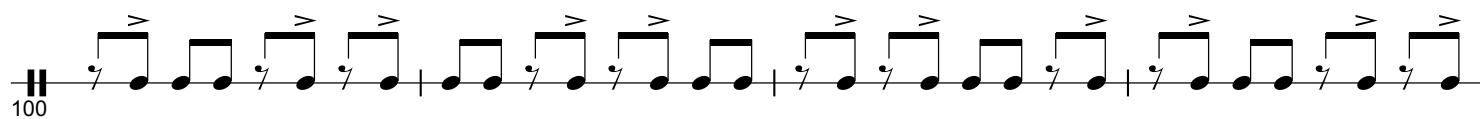
*Snare Enters* **H**

82

88

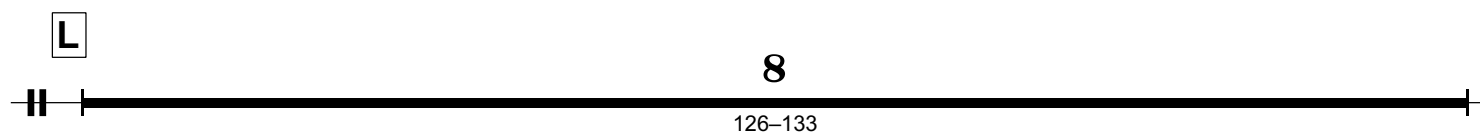
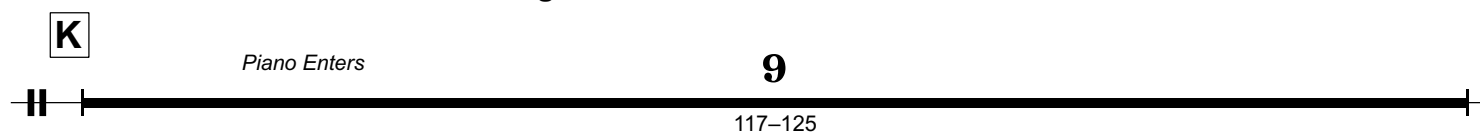
*WW tutti Repeats* **I** *f*

94



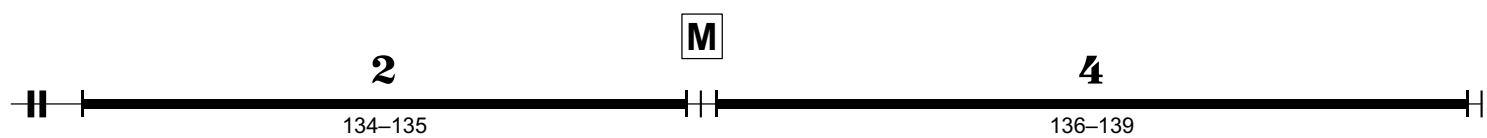
♩ = 120

**-Free From Bondage-**

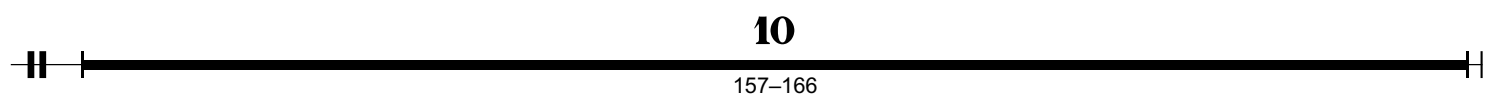
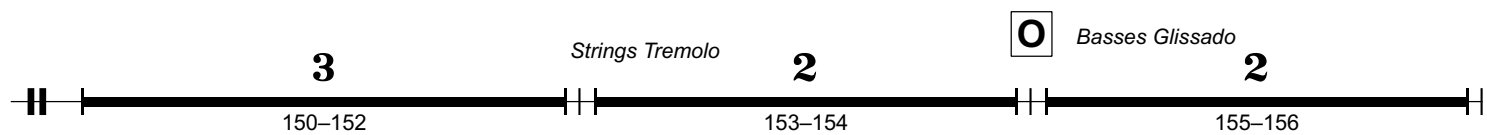
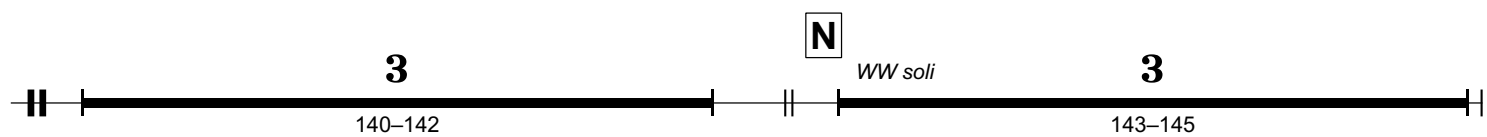


Perc 2 - tamb/ cymbals (sus /20" ride/10" china/hand crash)

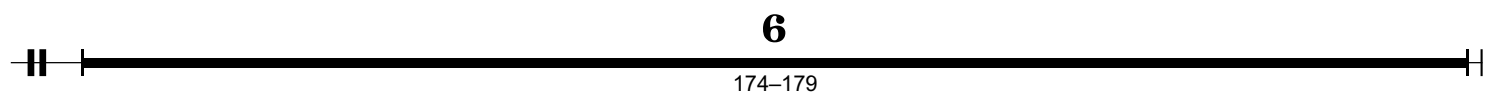
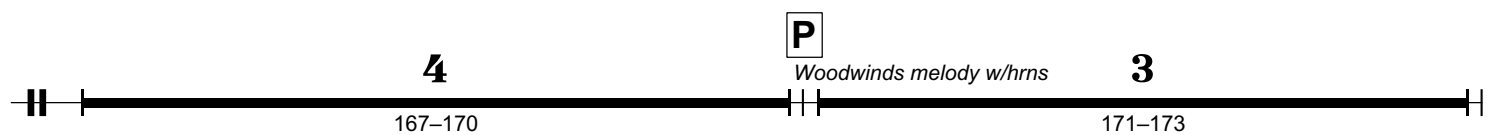
4



♩ = 100



♩ = 150



**Passage: -Across The Atlantic-**

**Q**

180

*mf*

183

186

189

191

*Bsns and Hrns 8th note rhythm*

**R**

194

198

202-204

**3**

**3/4**

Perc 2 - tamb/ cymbals (sus /20" ride/10" china/hand crash)

6

**-An Irish Welcome-**

**S**  $\text{♩} = 40$   
*Irish Tune Brass Choral* **8** **T** *Irish Tune String Melody* **3**  
 205-212 213-215

**5** **U** *Piano Enters* **6**  
 216-220 221-226

**2** **V** **4**  
 227-228 229-232

**Passage: - A Return To  
America Fully "Woke"-**

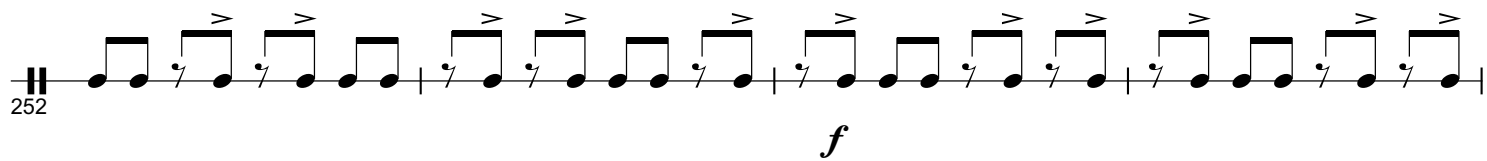
$\text{♩} = 150$   
**5** **W** *mf*  
 233-237

*Trumpets Enter*  
 240

244

**X**  
 248

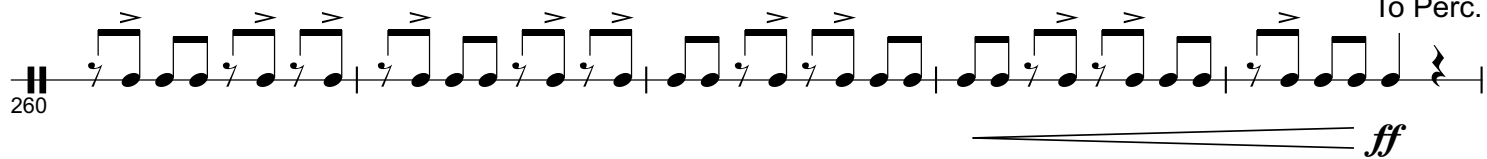
Y



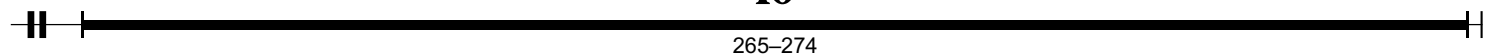
*My Country Tis of Thee*



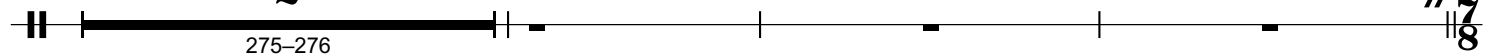
To Perc.



10



2

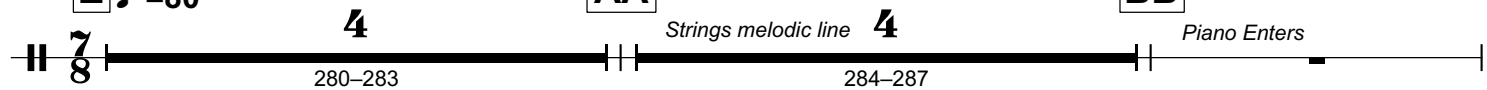


PART II: AMERICA A NEW LIFE

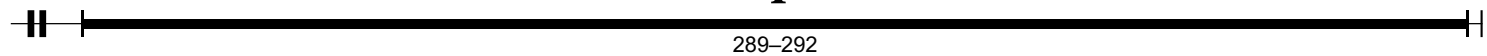
Z ♩ = 80

AA

BB



4



Perc 2 - tamb/ cymbals (sus /20" ride/10" china/hand crash)

8

7 CC 8

293-299 300-307

2 7

308-309

**-The Moral Hypocrisy-**

DD  $\text{♩} = 120$  3

310-312

Percussion  
to: 20" ride & china cymbal

dont play if drum set used  
(china) (ride)

*mf*

316

(bell of ride cymbal)

319

EE

normal (not bell)

High Strings Background

322

325

*f*



**FF**

*Melody Enters*

2 8

329-330 331-338

2 **GG** 7

339-340 341-347

*sus cymbal*

*mf*

# **-The Cries and the Sermons-**

*(dont play if drum set used)*

*Percussion Solo*

**HH**

*crash sus cymb* *china* *crash sus cymb*

*ff*

*Percussion solo designed by Vinnie Colaiuta*

349

352

354

356

358

**-The Woman-**

II ♪ = 110 **4**

361-364

**2** JJ *Background Enters* **2**

365-366 367-368

**2** KK *Melody 20" ride*

369-370 *mf*

373

sus cymbal LL

376 *mf* *Strings Tremolo* *mp*

**3** **8**

380-382 383-390

with drum set **-Your 4th of July-**

MM *Hand Crash cymbal*

391 *ff* *f*

399 sus cymbal

405 *f* *ff*

**4** *(sus cymbal let ring)*

411 *mf* *fff*